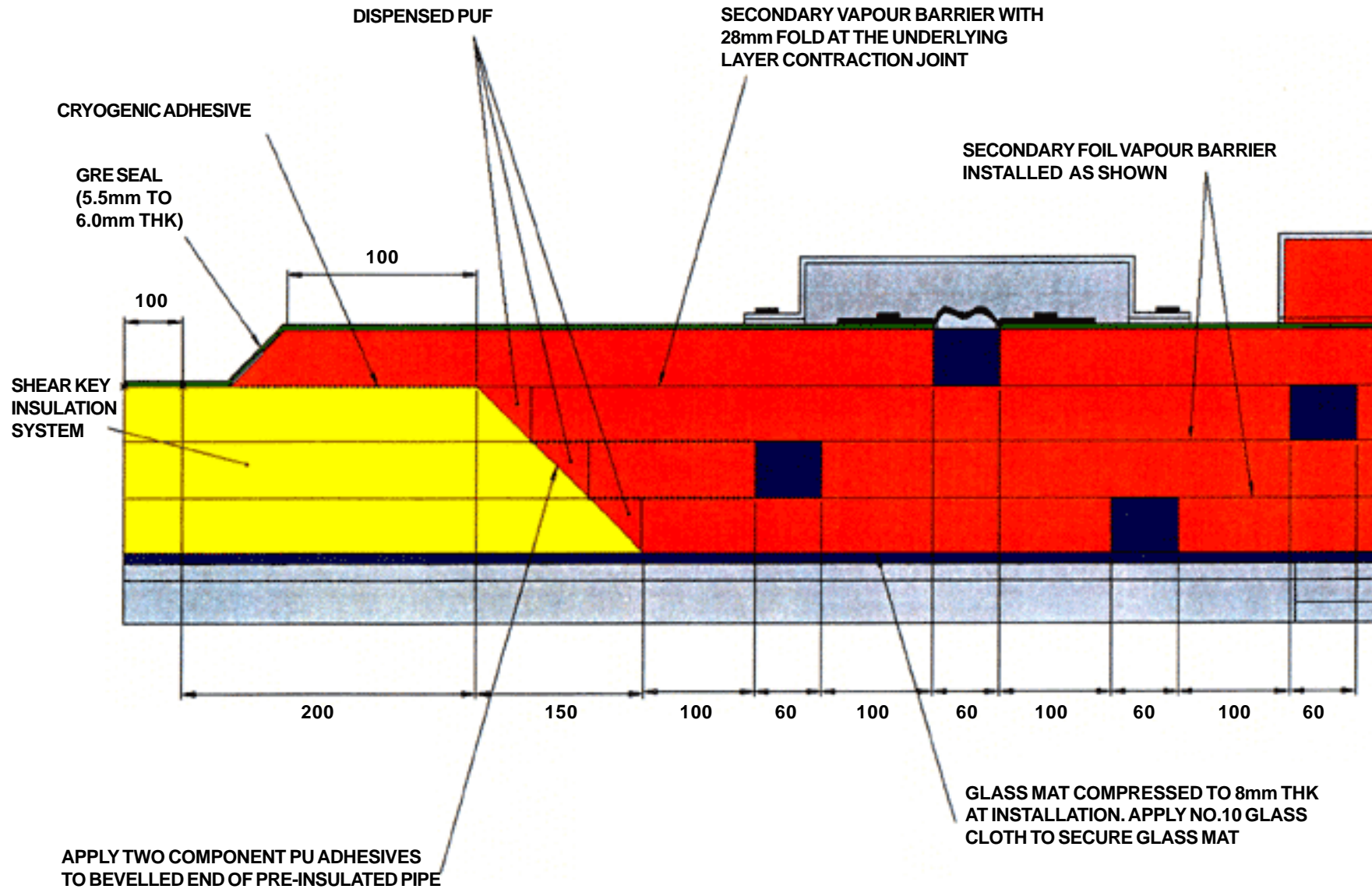
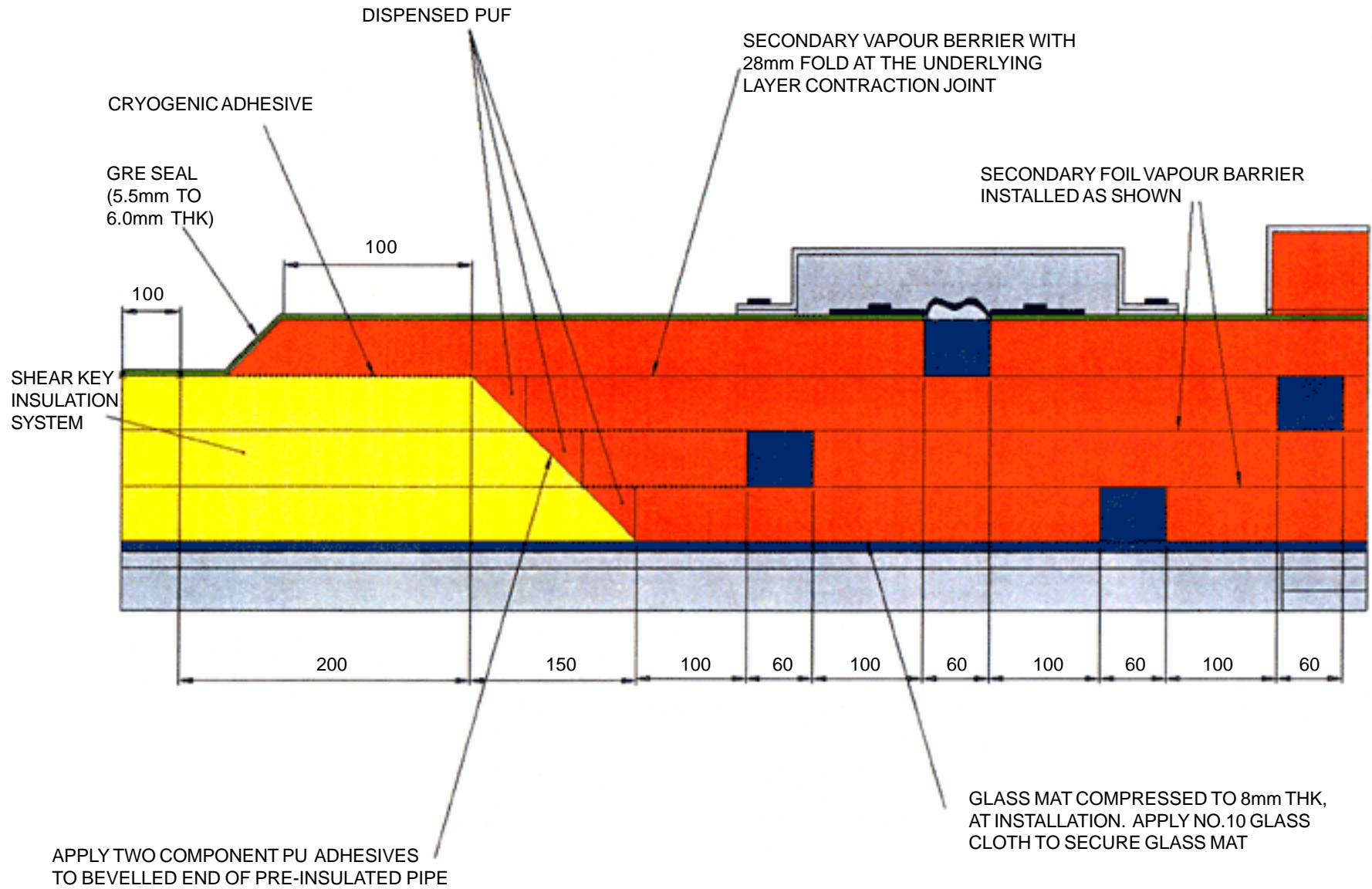


JOINT PORTIONS BETWEEN SHEAR KEY TYPE OF PREINSULATED PIPE SECTIONS,
 SHEAR KEY AND CONTRACTION JOINT DETAILS

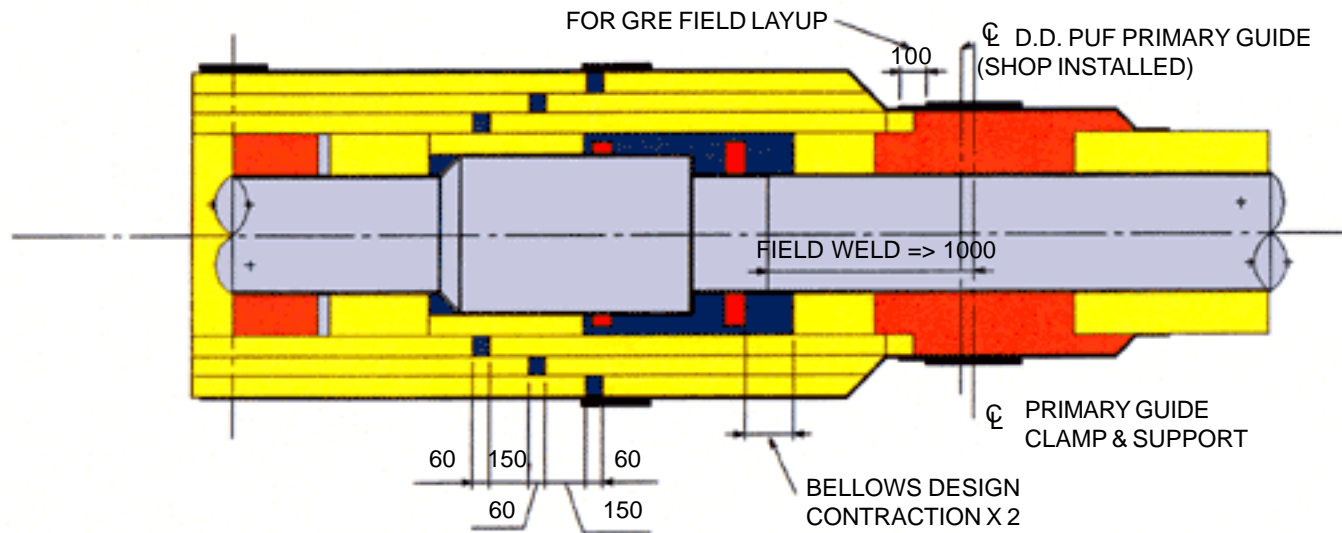
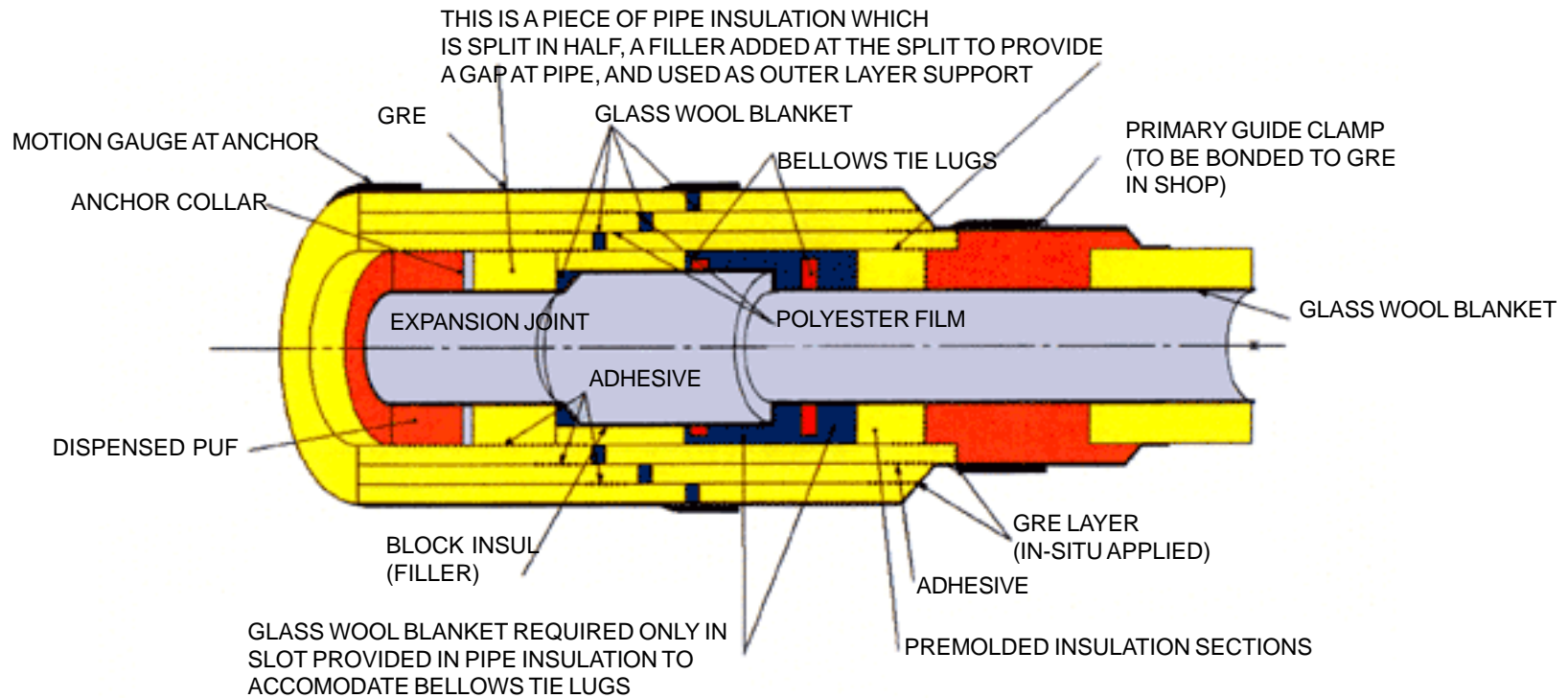


APPLY TWO COMPONENT PU ADHESIVES TO BEVELLED END OF PRE-INSULATED PIPE

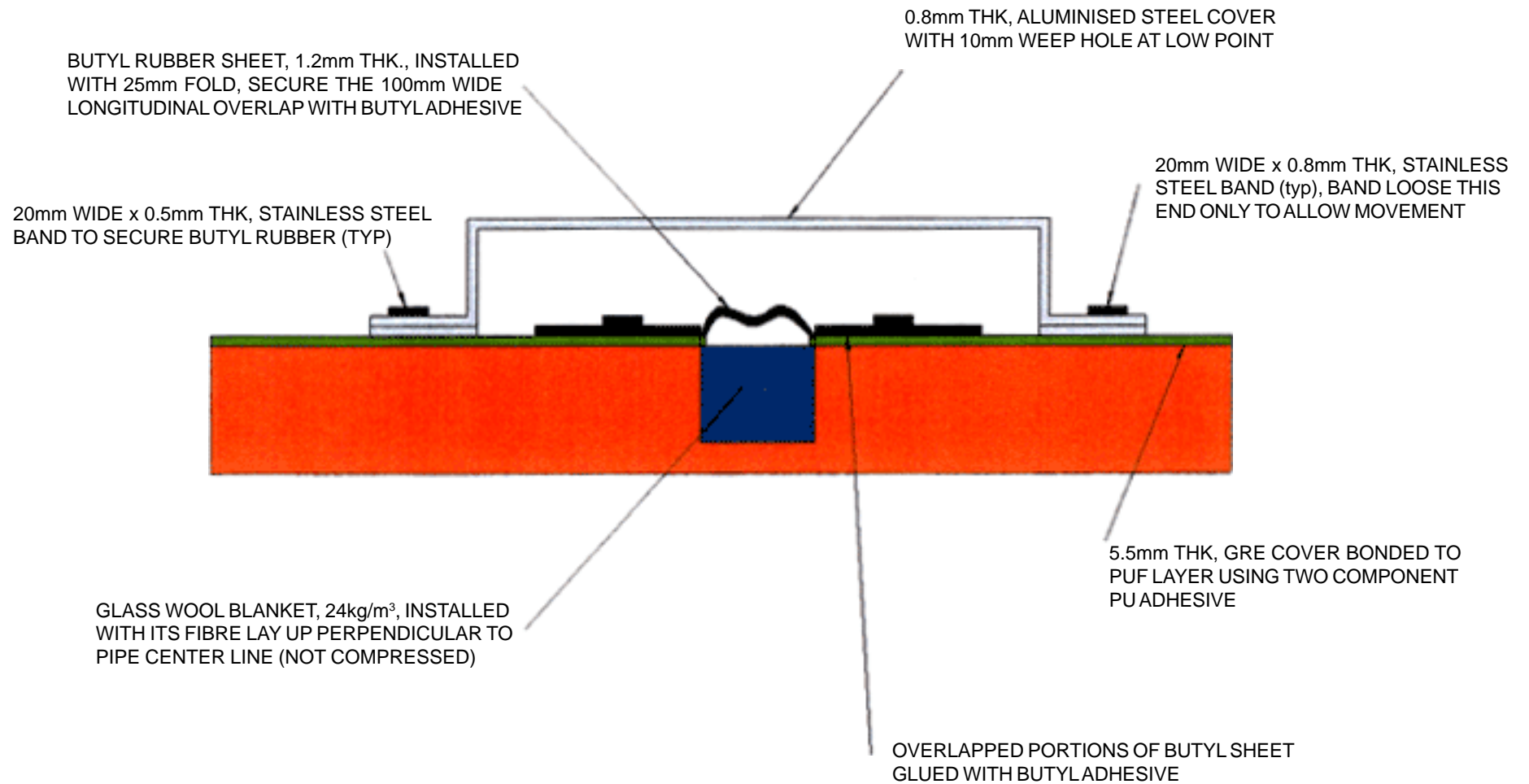
**INSULATION OF ANCHOR PORTION
(SLIDE THROUGH AND SHEAR KEY INSULATION SYSTEMS)**



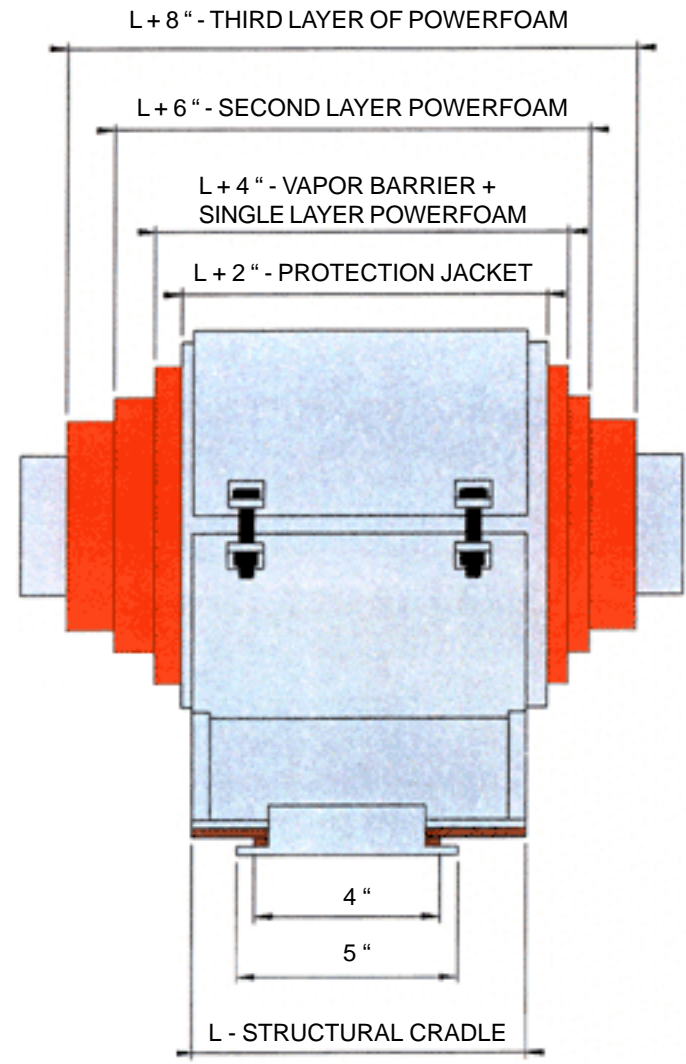
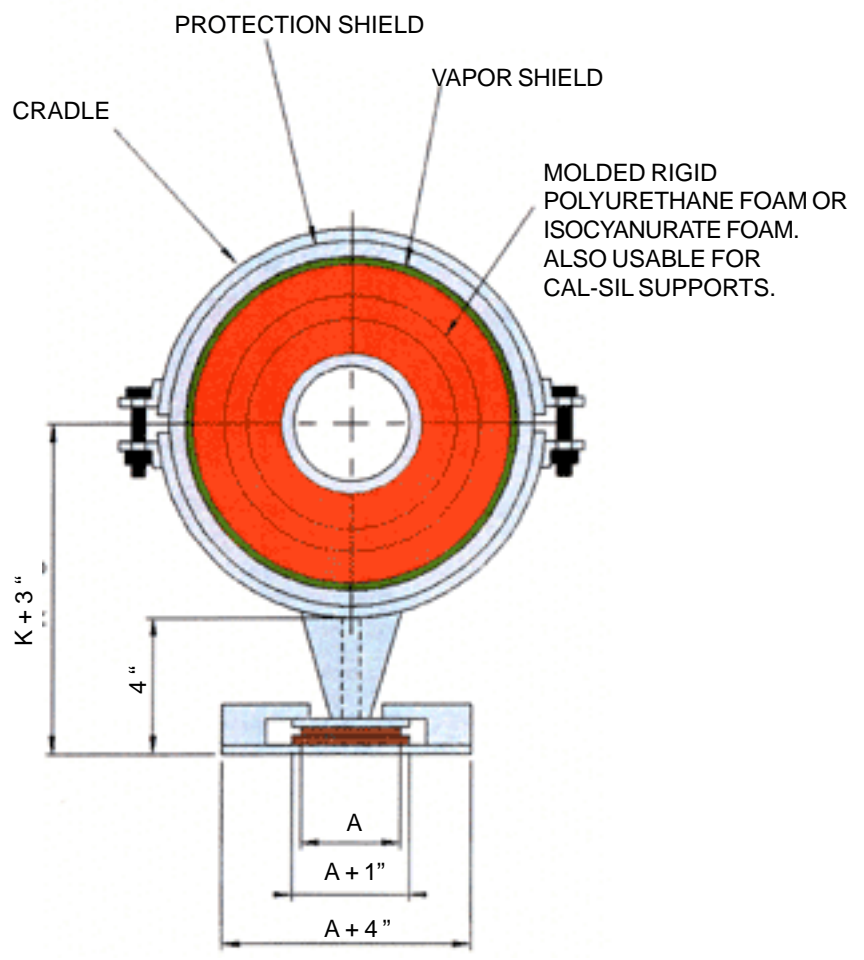
**INSULATION OF ANCHOR PORTION
(SLIDE THROUGH AND SHEAK KEY INSULATION SYSTEMS)**

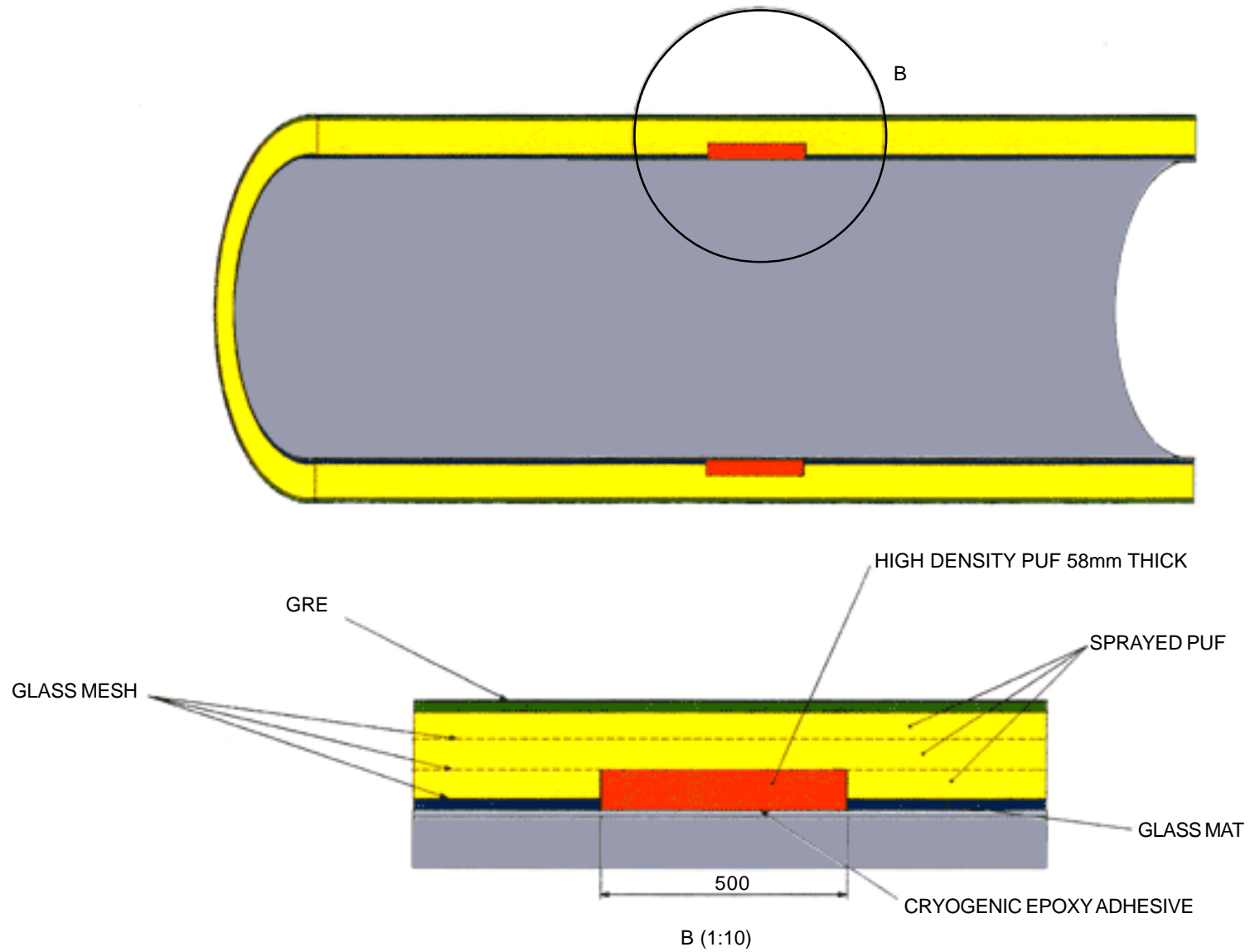


INSULATION AT PRIMARY GUIDE AND BELLOWS JOINT (SLIDE THROUGH INSULATION SYSTEM)

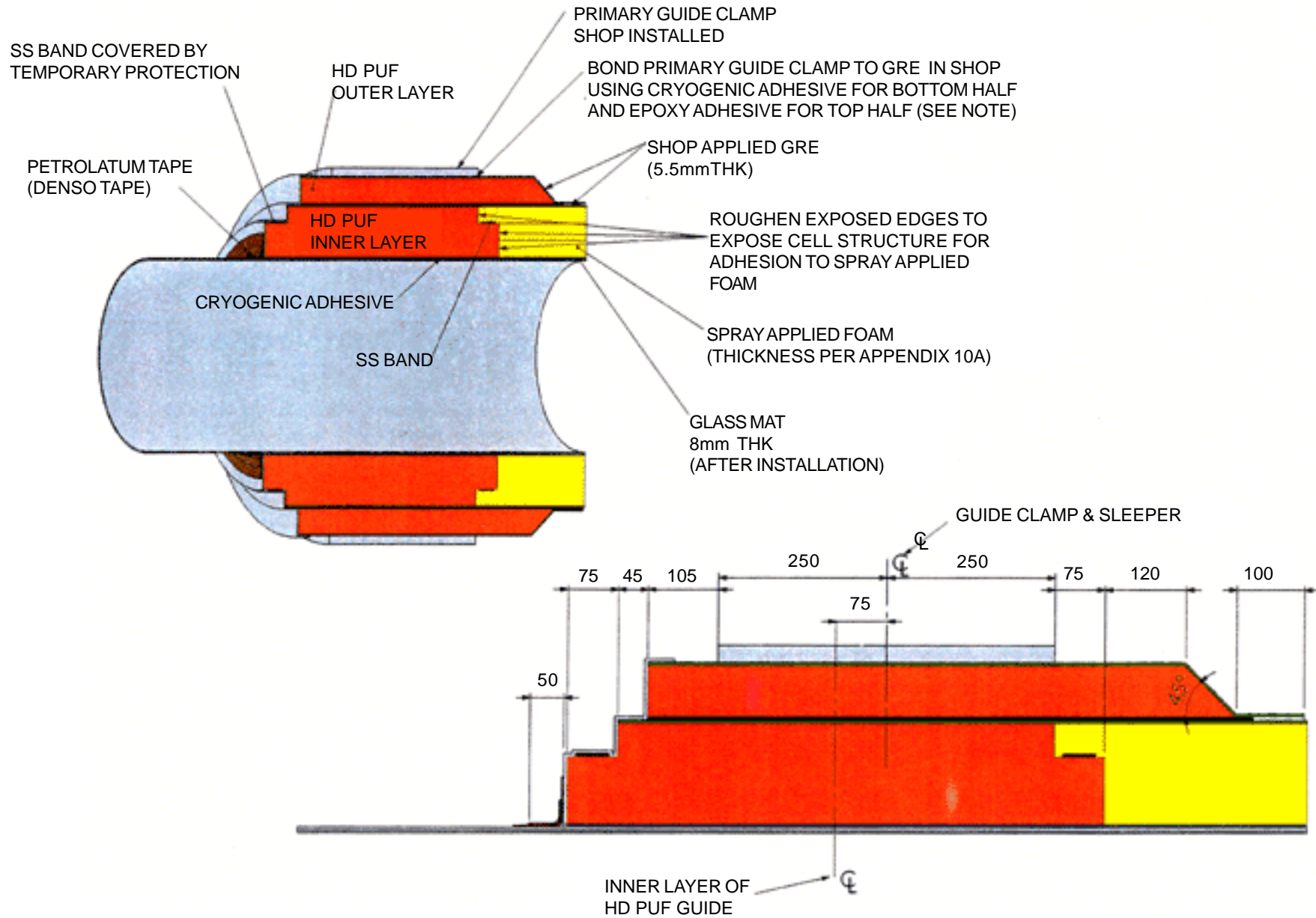


INSULATION OF ANCHOR PORTION
 (SLIDE THROUGH AND SHEAR KEY INSULATION SYSTEMS)

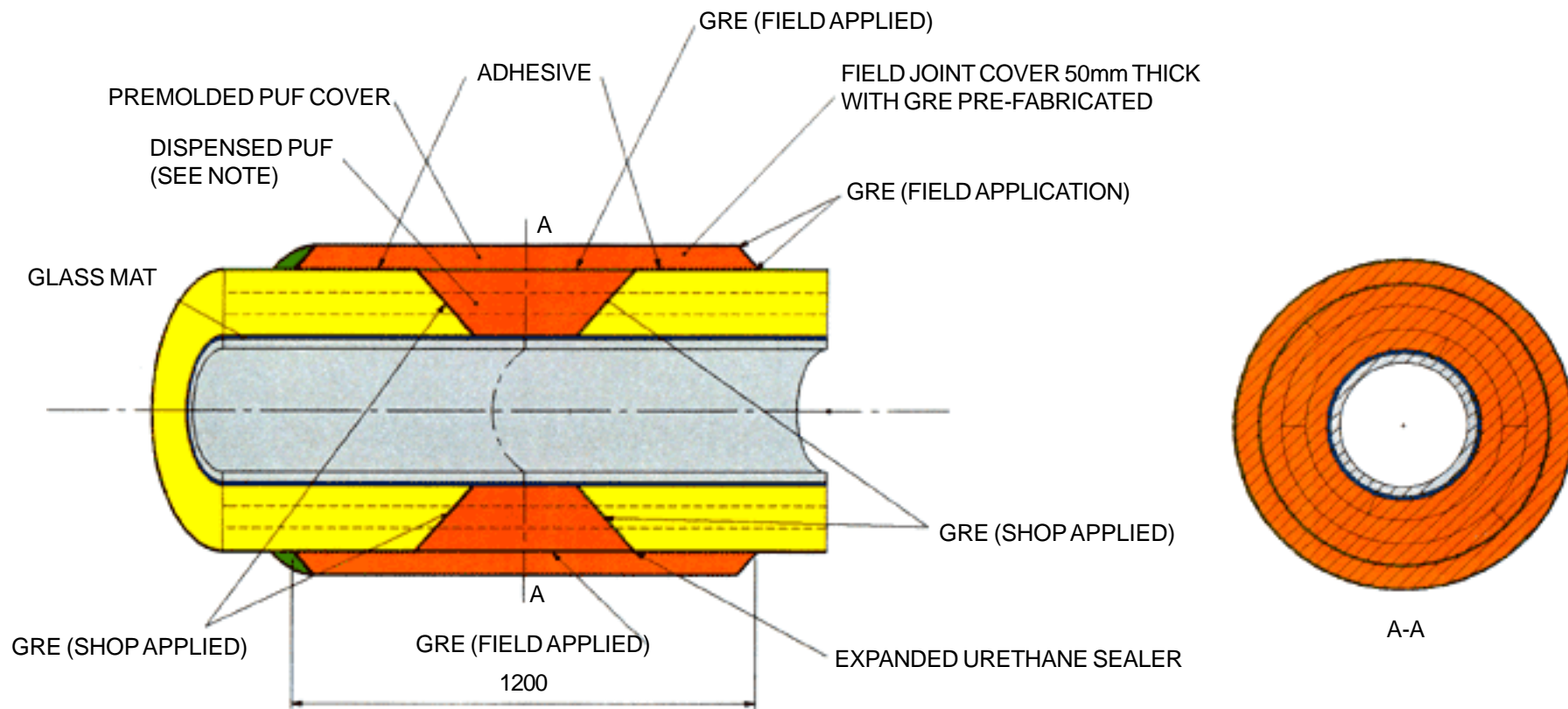




JOINT PORTIONS BETWEEN SHEAR KEY TYPE OF PREINSULATED PIPE SECTIONS, SHEAR KEY AND CONTRACTION JOINT DETAILS



DETAIL AT PRIMARY GUIDE ON THE RUNDOWN LINE



NOTE: SEALING TAPE SHALL BE REMOVED FROM BEVELLED INSULATION ENDS BEFORE JOINT INSTALLATION

FACE OF GRE BEVELS SHALL BE COATED WITH TWO COMPONENT PU ADHESIVE BEFORE DISPENSING PUF

FIELD JOINT COVER (SLIDE THROUGH INSULATION SYSTEM)